



M*CARBO KEL-TEC KSG/KS7 QD Single Point Sling Mount



Download or Print Instructions | Contact: help@mcargo.com | Page 1

You must be 18 yrs of age to purchase. We advise that all parts purchased from our inventory be installed and inspected by a qualified gunsmith. Modifying your weapon may be prohibited in your state. Do not modify your sear or hammer engagement surfaces. Before installing please be sure to check all local state and federal laws. By installing this part you agree to take full responsibility for any and all legal, health and warranty consequences that may be incurred.

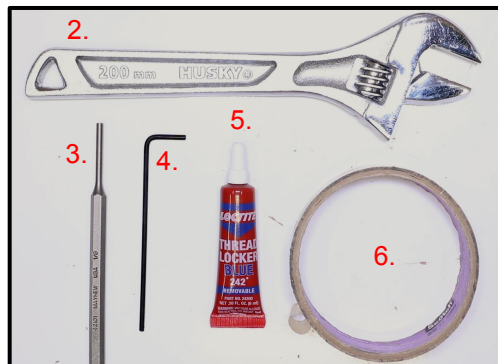


Step 1: Clear your Firearm - Check the Chamber, Bolt Face and Magazine Well.

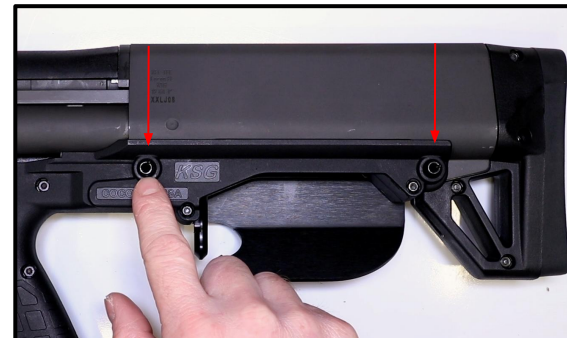


1. MCARBO KSG or KS7 QD Single Point Sling Mount
2. Adjustable Wrench
3. 1/8" Punch
4. 3/32" Allen Key
5. Blue 242 Loctite
6. Masking Tape
7. **Eye Protection**

Step 2: Gather Parts and Tools needed for Installation.



Step 3: Choose which Takedown Pin you want to Install the Sling Mount in.



Step 4: Open your MCARBO KSG QD Single Point Sling Mount.





M*CARBO KEL-TEC KSG/KS7 QD Single Point Sling Mount

Download or Print Instructions | Contact: help@mcargo.com | Page 2



M*CARBO
INTEGRITY • CRAFTSMANSHIP • PROUDLY AMERICAN

You must be 18 yrs of age to purchase. We advise that all parts purchased from our inventory be installed and inspected by a qualified gunsmith. Modifying your weapon may be prohibited in your state. Do not modify your sear or hammer engagement surfaces. Before installing please be sure to check all local state and federal laws. By installing this part you agree to take full responsibility for any and all legal, health and warranty consequences that may be incurred.

Step 5: Loosen the Screw on the end of the Sling Mount.



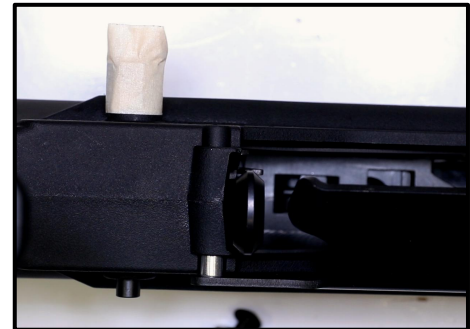
Step 7: Turn the KSG Upright. Use your 1/8" Punch to Push out the Takedown Pin.



Step 6: Slide the Spacer off of the Sling Mount. Then Wrap the Round Portion of the Mount with Masking Tape to protect it from Scratches.



Step 8: Decide which side you want the Sling Mount Installed, then Push it through.





M*CARBO KEL-TEC KSG/KS7 QD Single Point Sling Mount

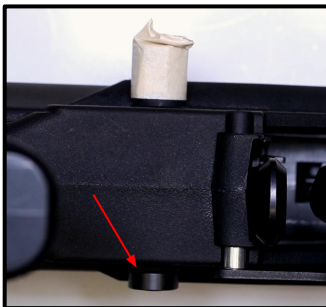


Download or Print Instructions | Contact: help@mcargo.com | Page 3

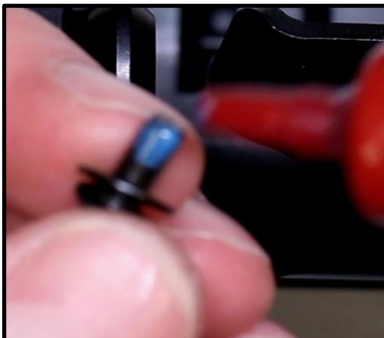
You must be 18 yrs of age to purchase. We advise that all parts purchased from our inventory be installed and inspected by a qualified gunsmith. Modifying your weapon may be prohibited in your state. Do not modify your sear or hammer engagement surfaces. Before installing please be sure to check all local state and federal laws. By installing this part you agree to take full responsibility for any and all legal, health and warranty consequences that may be incurred.



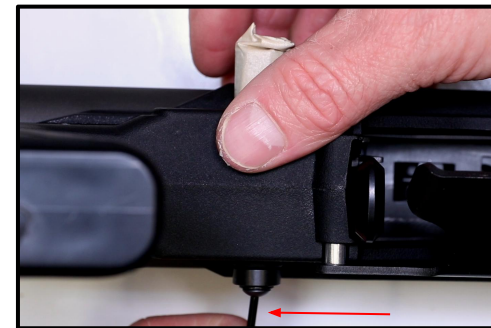
Step 9: Grab your Spacer and get it Flush with the other side of the Sling Mount.



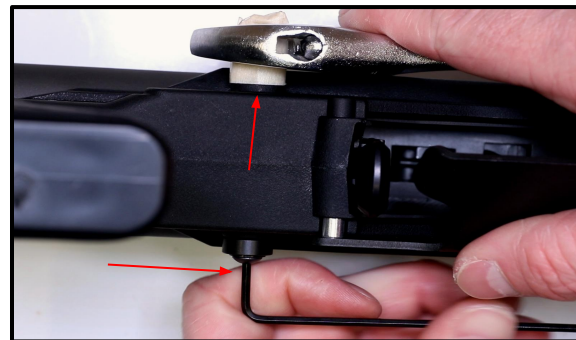
Step 10: Grab the Sling Mount Screws and put some Blue Loctite on the Threads.



Step 11: Use your 3/32" Allen Key to Tighten the Screw back onto the Sling Mount.



Step 12: Use your Adjustable Wrench to grab the Flats of the Sling Mount. Use your Allen Key and turn them both in Opposite Directions to Torque it Down





M*CARBO KEL-TEC KSG/KS7 QD Single Point Sling Mount

Download or Print Instructions | Contact: help@mcargo.com | Page 4



M*CARBO
MILITARY • OUTDOORS • HUNTING

You must be 18 yrs of age to purchase. We advise that all parts purchased from our inventory be installed and inspected by a qualified gunsmith. Modifying your weapon may be prohibited in your state. Do not modify your sear or hammer engagement surfaces. Before installing please be sure to check all local state and federal laws. By installing this part you agree to take full responsibility for any and all legal, health and warranty consequences that may be incurred.

Step 13: Make sure as you rotate the QD Feature everything Moves Together as one Piece.



Step 14: Remove the Masking Tape. Wipe off any Tape Residue.



Step 15: Insert your QD Sling and your all set!

