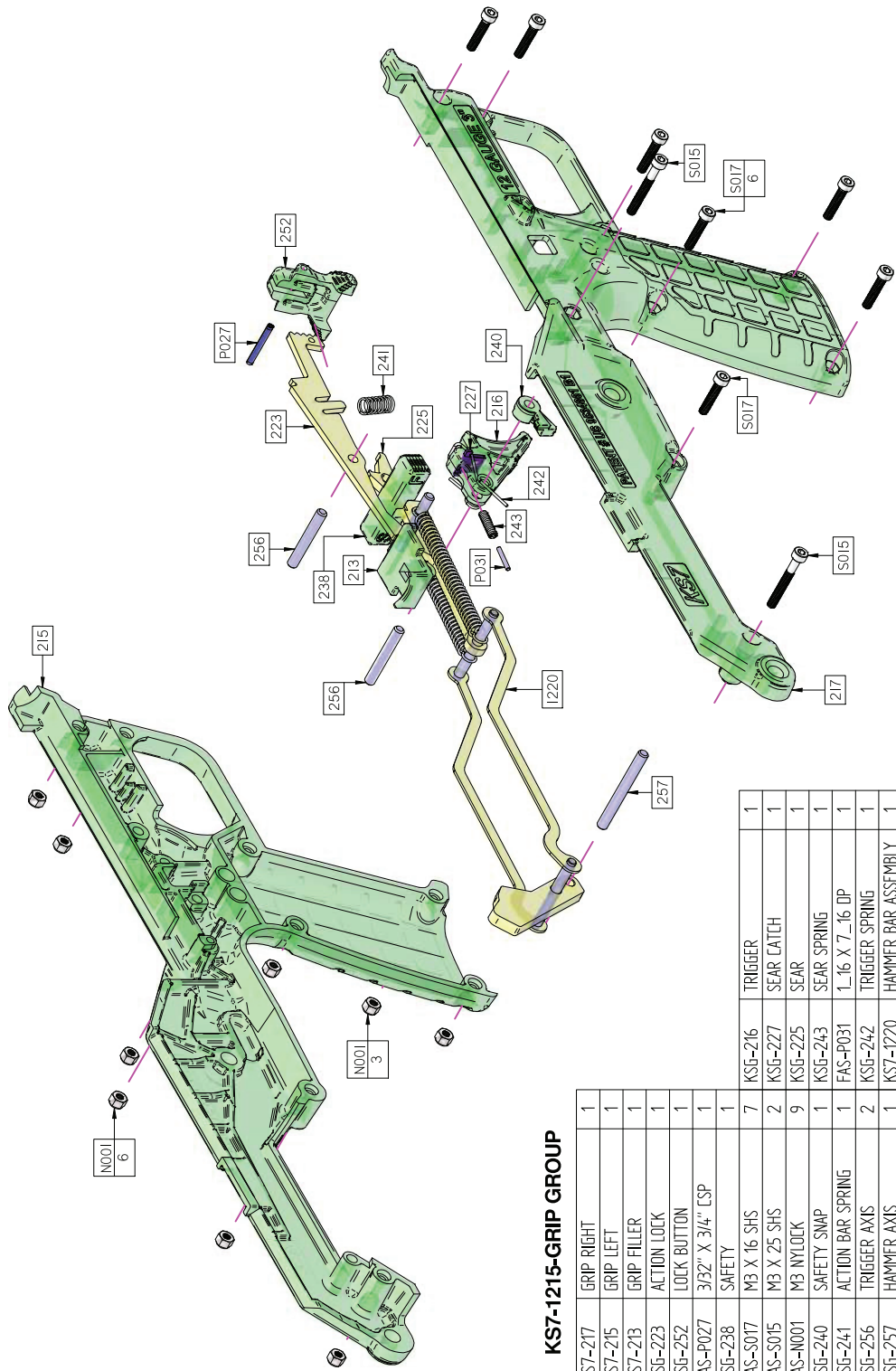


FAS-M002	1/8 STAINLESS BALL	1	K57-147	CARRY HANDLE	1	K5G-118	BARREL	1
FAS-M003	CUSTOM WASHER	2	K57-148	FIBER OPTIC	1	K5G-136	BARREL NUT	1
FAS-M001	M3 NYLOCK	8	K57-185	BOLT CARRIER WELDMENT	1	K5G-137	BARREL RING	2
FAS-P027	3/32" X 3/4" CSP	1	K57-209	FRAME PIN	2	K5G-138	SIGHT BASE	1
FAS-P028	5/32" X 5/8" LSP	1	K57-218	FOREND RIGHT	1	K5G-170	BOLT	1
FAS-S008	M4 X 6 BHS	4	K57-219	FOREND LEFT	1	K5G-172	EXTRACTOR	1
FAS-S015	M3 X 25 SHS	4	K57-300	RECEIVER WELDMENT	1	K5G-174	BOLT LOCK	1
FAS-S016	M3 X 22 SHS	1	K57-303	CTG INNER	1	K5G-176	FIRING PIN	1
FAS-S017	M3 X 16 SHS	3	K57-309	ACTUATOR BAR	1	K5G-177	EXTRACTOR AXIS	1
FAS-S023	M4 X 12 BHS	2	K57-318	CTG BRACE	1	K5G-178	EXTRACTOR SPRING	1
K57-1215	GRIP ASSEMBLY	1	K57-323	CTG STOP PIN	2	K5G-249	CAPTOR SPRING	2
K57-135	BARREL EXTENSION	1	K57-331	CTG OUTER	1	K5G-311	MAG FOLLOWER	1
K57-139	MUZZLE RING	1	K57-338	CTG SPRING	1	K5G-325	MAG SPRING	1
K57-140	MUZZLE PLATE	1	K57-350	LIFTER AXIS	2	K5G-352	LIFTER	1
K57-141	DETENT SPRING	1	K57-376	STOCK RIGHT	1	K5G-380	BUTT PAD	1
K57-146	MAG CAP	1	K57-377	STOCK LEFT	1			



KS7-1215-GRIP GROUP

KS7-217	GRIP RIGHT	1
KS7-215	GRIP LEFT	1
KS7-213	GRIP FILLER	1
KSG-223	ACTION LOCK	1
KSG-252	LOCK BUTTON	1
FAS-P027	3/32" X 3/4" CSP	1
KSG-238	SAFETY	1
FAS-S017	M3 X 16 SHS	7
FAS-S015	M3 X 25 SHS	2
FAS-N001	M3 NYLOCK	9
KSG-240	SAFETY SNAP	1
KSG-241	ACTION BAR SPRING	1
KSG-256	TRIGGER AXIS	2
KSG-257	HAMMER AXIS	1
KSG-216	TRIGGER	1
KSG-227	SEAR CATCH	1
KSG-225	SEAR	1
KSG-243	SEAR SPRING	1
FAS-P031	1_16 X 7_16 DP	1
KSG-242	TRIGGER SPRING	1
KSG-1220	HAMMER BAR ASSEMBLY	1