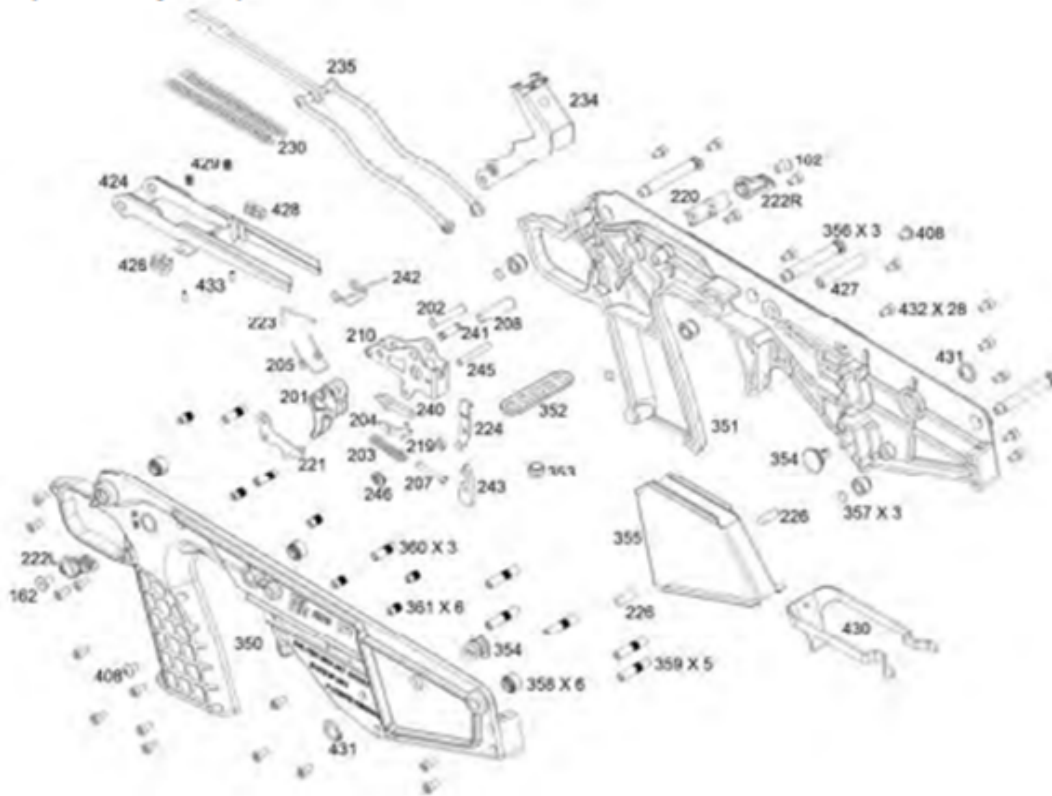


## Grip Assembly Group



162-MX8 FLAT HEAD  
 201-TRIGGER  
 202-TRIGGER AXIS  
 203-TRIGGER SPRING  
 204-TRIGGER BAR  
 205-TRIGGER BAR SPRING  
 207-TRIGGER SPRING GUIDE  
 208-TRIGGER HOUSING PIN  
 210-RIVETED TRIGGER HOUSING  
 219-SELECTOR SNAP WASHER  
 220-SAFETY  
 221-SAFETY CAM  
 222L-SAFETY LEVER LEFT  
 222R SAFETY LEVER RIGHT  
 223-SELECTOR SNAP SPRING  
 224-SELECTOR SNAP

226-HAMMER AXIS  
 230-HAMMER SPRING  
 234-RIVETED HAMMER  
 235-RIVETED SEAR BAR  
 240-SEAR  
 241-TRIGGER BAR AXIS  
 242-SEAR SPRING  
 243-SEAR TRIP  
 245-SEAR TRIP AXIS  
 246-SEAR TRIP BUSHING  
 350-GRIP LEFT  
 351-GRIP RIGHT  
 352-SINGLE POINT MOUNT  
 353-SINGLE POINT MOUNT PIN  
 354-SLING SWIVEL  
 355-EJECTION CHUTE

356-FRAME PIN  
 357-CAPTOR SPRING  
 358-PIN CAPTOR  
 359-GRIP NUT LONG  
 360-GRIP NUT MEDIUM  
 361-GRIP NUT SHORT  
 408-MX8 BUTTON HEAD  
 424-BOLT STOP WELDMENT  
 427-BOLT STOP AXIS  
 428-BOLT STOP BUTTON  
 429-BOLT STOP SPRING  
 430-MAG CATCH  
 431-SWIVEL RETAINING RING  
 432-MX8 SOCKET CAP  
 433-BOLT STOP BUTTON PIN